

Stop frame animation

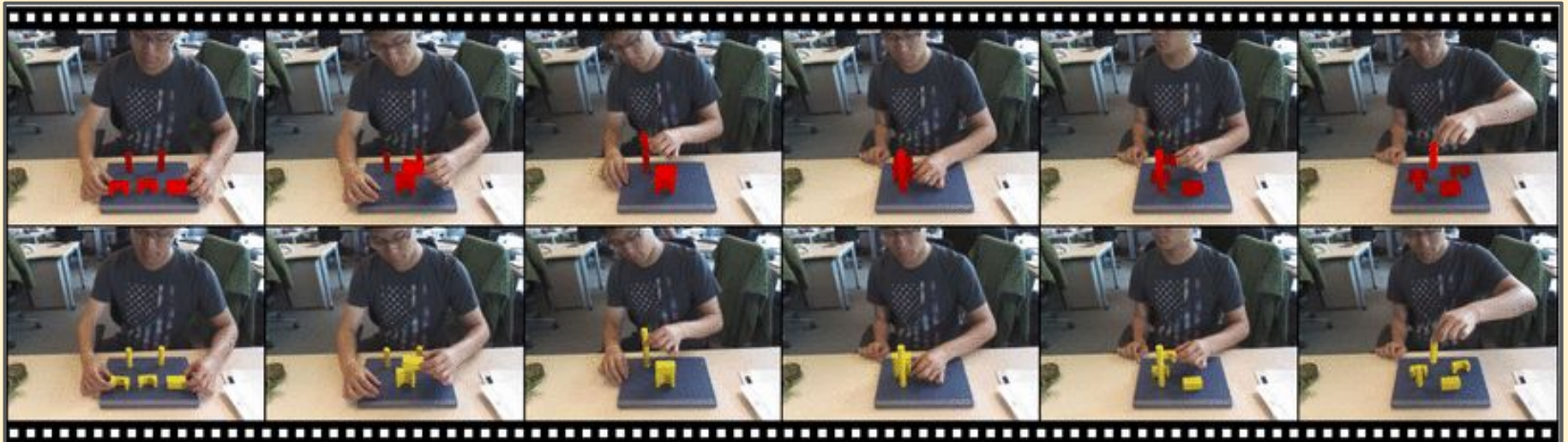
Movies, videos and animations are made up of lots and lots of individual **still images**



Stop frame animation

The individual still images are called **frames**

The still images play really quickly to fool your eyes. Video usually plays at 24 **frames per second (fps)**



Stop frame animation

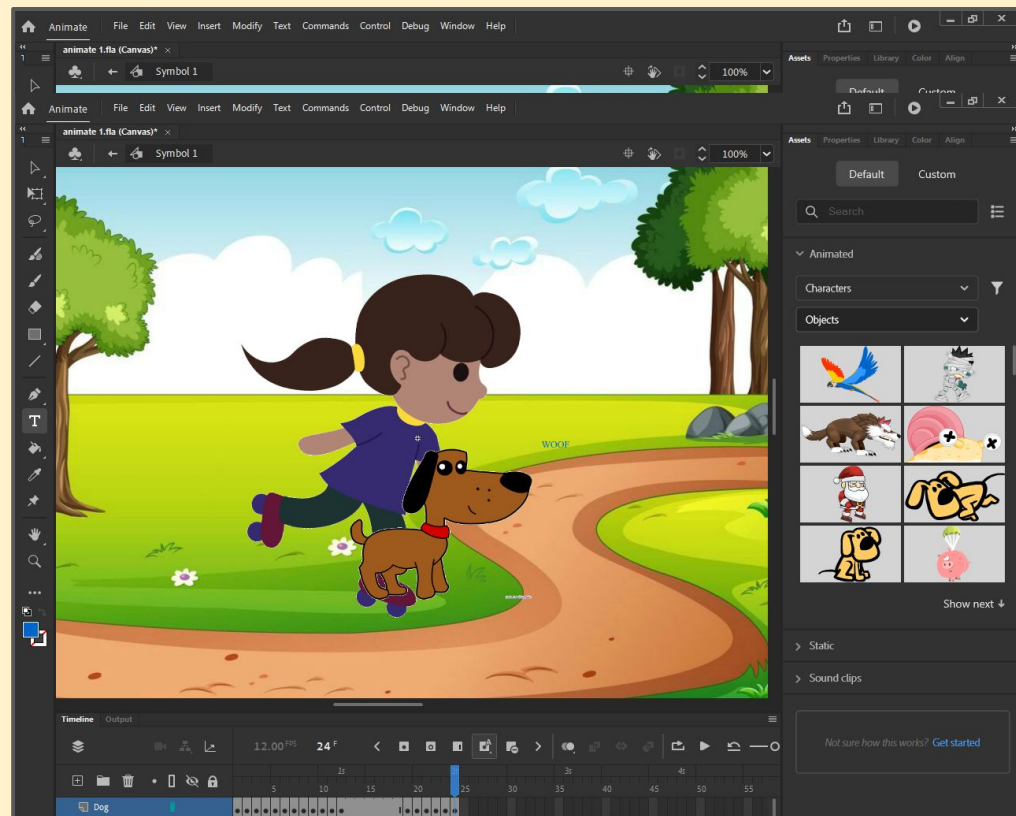
Stop frame animation is a simple type of animation which is made using still images

The image moves a little bit in each frame

Sometimes clay figures or lego minifigures are used. Sometimes you use images which have been drawn. Or you can use computer images

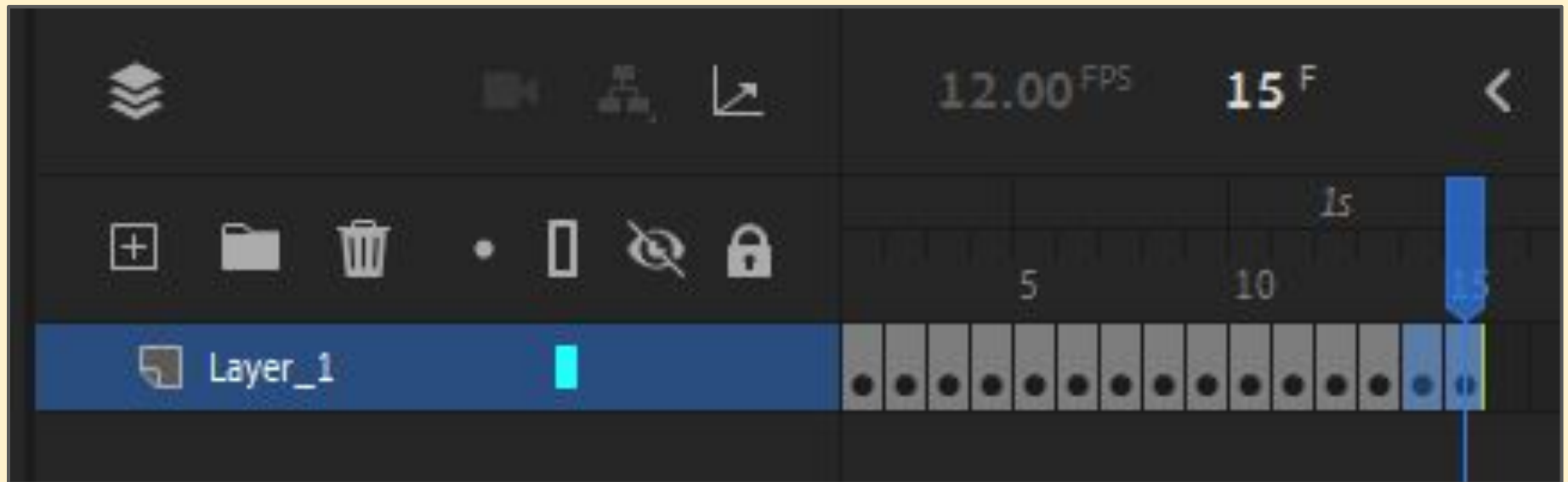
Stop frame animation

We'll make a short, simple stop frame animation using Adobe Animate

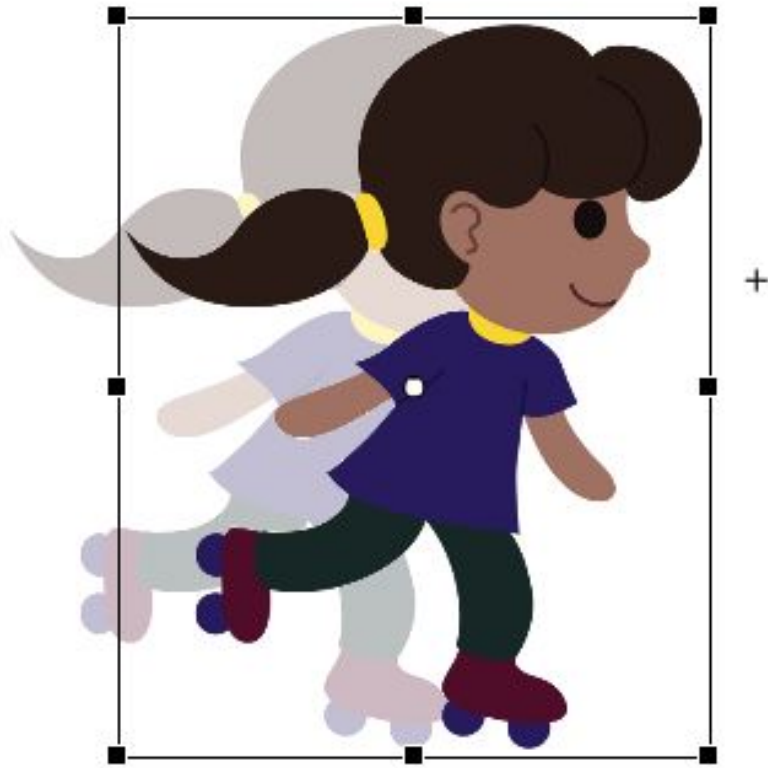


Stop frame animation

We'll use 12 frames per second



Stop frame animation



Each frame you
move the
character a **short
distance**